



DEFENSOR

Intrusion detection system with cable shock sensor mounted on fence. The new technology of the DEFENSOR cable associate to the GD-5000-E analyzer, increase the performance level with a better amplification of the signal and significant decrease in background noise to obtain a very low rate of false alarms and excellent quality of the detection.

DEFENSOR Cable – vibration detection on the fence

New electronic GD-5000-E

Better probability of detection

Very low rate of false alarms

Decreasing of background noise

High level of signal precision

Patented detection technology

OREP

DEFENSOR

Intrusion detection system with cable shock sensor mounted on fence.

Description

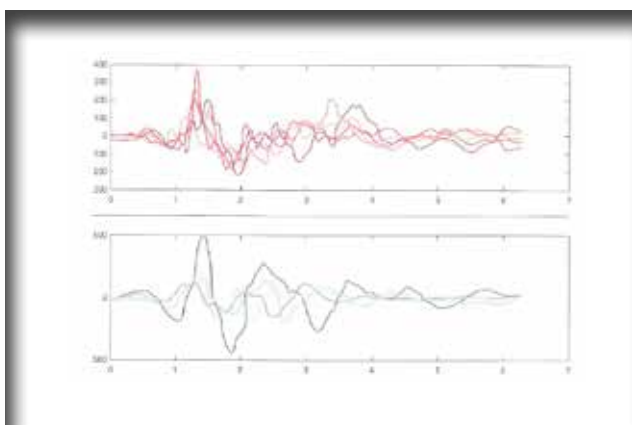
The DEFENSOR system excels once again in the analysis of signal. The combination of the DEFENSOR cable with its unique magnetic forms and the GD-5000-E electronic board is revolutionizing the technology by offering levels of detection and noise reduction never achieved.

Features and Advantages

- ✓ A leading technology in the market
- ✓ A very high detection rate
- ✓ Analysis of background noise and signal attenuation
- ✓ Easy to install and simple settings
- ✓ Low maintenance, easy and fast

Alarms information

- ✓ Cutting and Sawing Detection (Fence panels, Wires, Bars...)
- ✓ Tamper on junction boxes and electronics enclosure



Support Types

- ✓ Fences
- ✓ Walls
- ✓ Steel cladding of buildings
- ✓ Barbed wires / Concertina

Applications and reference

Laboratories - Chemical and Petrochemical sites - Industrial sites - PV fields - Temporary protection